

NEWSLETTER
week ending 21st February 2025



CHILDREN'S MENTAL HEALTH WEEK

Thank you to everyone who donated to our Children's Mental health Week. We raised a fantastic £82.75 which will be donated to Place2Be children's mental health charity.

WALKING HOME

Now that the nights are lighter, children in class 4 who have been in an activity club until 4pm can resume walking home, providing we have written consent.

STAFFING UPDATES

We are pleased to welcome Miss Atkinson and Mrs Marin who will be working in Class 2 (Year 1 & 2) until after the Whit holidays.

CLASS WORSHIPS

Please find below details of our upcoming class worships, taking place in the school hall at 9.00am:

Class 1: 14th March 2025
Class 2: 20th March 2025
Class 3: 28th March 2025
Class 4: 4th April 2025

There will be a Celebration Worship on Friday 4th April 2025 at 2.45pm – all parents and carers are welcome.

PARENT CONSULTATIONS

Monday 31st March 2025 – 3:30pm to 6:30pm
Tuesday 1st April 2025 – 3:30pm to 5:30pm

Please contact the main office to book an appointment.

AFTER SCHOOL CLUBS FROM MONDAY 3RD MARCH 2025

PLEASE NOTE DUE TO PLANNED STAFF ABSENCE, MRS SCORER'S ART CLUB WILL NOT RESUME AFTER THE HALF TERM HOLIDAY.

Reminder that the Year 1 & 2 sports club ends on Friday 21st February 2025 and will not continue after half term.

Mrs Minton's ASC from 3rd March are as follows:

Monday: Dodgeball
Tuesday: Games night
Wednesday: Spring fun activities
Thursday: Construction and Building
Friday: Indoor and outdoor fun and games

KEEPING US UP TO DATE

If you move house, change your phone number or need to update us regarding anything about your child, please contact the main school office.

SCHOOL CORRESPONDENCE

Copies of letters, newsletters, menus, and forms are available in the entrance of the school office. If you need a copy of a letter, please call in and take one.

SWIMMING

There will be no swimming lesson on Tuesday 11th March 2025.

Swimming lessons will run until Tuesday 25th March 2025 – this will be the final lesson for the academic year.

NATIONAL OFFER DAY

Parents will learn the outcome of applications for school places on the following dates:

National offer day for Secondary schools:	3 rd March 2025
Deadline to lodge an appeal for Secondary schools:	31 st March 2025
National offer day for Primary schools:	16 th April 2025
Deadline to lodge an appeal for Primary schools:	15 th May 2025

If you applied online, your child's allocation will be available to view on the Local Authority website. If requested during the application process, you will also be sent an allocation email. Allocation letters will be posted second class to parents/guardians who did not apply online.

FREE SCHOOL MEALS (FSM)

School may be eligible to receive further income to support the education of our children in school. In order for school to access this money, known as Pupil Premium, we need to know the eligibility of our parents and carers. With this in mind, we would like to ask all parents and carers for their help in checking eligibility but also within the last six years.

Your child may be eligible if you access any of the following:

- Looked after by the Local Authority for at least one day in the last year (e.g. foster care)
- Adopted from care
- Left care through Special Guardianship
- Subject to a Child Arrangement Order
- In receipt of Disability Living Allowance

Your child may also be eligible if you are in receipt of any of the following:

- Income Support or Income Based Job Seekers Allowance
- Income related Employment Support Allowance
- Support under part V1 of the Immigration and Asylum Act 1999
- The guaranteed element of State Pension Credit
- Earn less than £16190 per annum and are in receipt of Child Tax Credit
- Working Tax Credit run on (paid for 4 weeks after you stop qualifying for Working Tax Credit)
- Universal Credit

To apply, please go to the address below. This should take no more than 10 minutes to complete.

[Free School Meals - Information - apply | HBC Online \(hartlepool.gov.uk\)](https://online.hartlepool.gov.uk/service/Free%20School%20Meals%20apply)
[https://online.hartlepool.gov.uk/service/Free School Meals apply](https://online.hartlepool.gov.uk/service/Free%20School%20Meals%20apply)

ATTENDANCE

Being in school is the best way for children to learn and reach their potential. Time in school is important to your child's achievement, well-being and wider development. We have had some great feedback about attendance certificates. Children are keen to achieve these for their class or year group, which is having a positive impact on attendance. Please ask your child about these. Please remember gates open at 8.40am with lessons starting at 8.45am. Gates close at 8.50am. If your child arrives after this time, they will receive a late mark.

Class 1: 94.30%

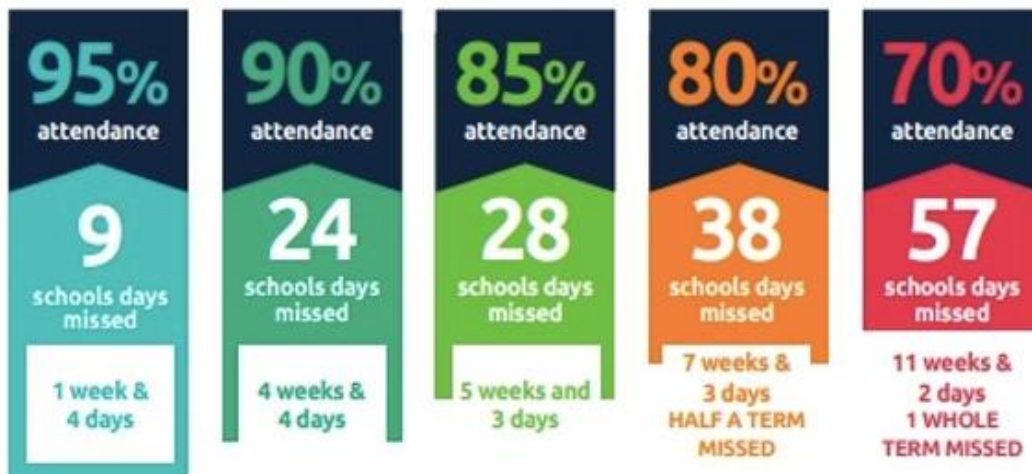
Class 2: 95.40%

Class 3: 95.58%

Class 4: 95.69%

It is **vital** that your child is on time for school every day.
School starts at **8:45am**

Every day in school counts...



and every minute counts...



IMPORTANT DATES

Monday 3rd March 2025	School re-opens
Monday 11 th March 2025	School Nurse drop in session - 8.45am to 9.45am
Friday 14th March 2025	Class 1 worship – 9am - parents and carers welcome
Thursday 20 th March 2025	Class 2 worship – 9am - parents and carers welcome
Friday 21 st March 2025	Comic Relief Non-Uniform Day – School Council sent out letter
Tuesday 25 th March 2025	Last swimming session
Wednesday 26 th March 2025	Police Drop In Session 1.30 to 3.30pm
Friday 28th March 2025	Class 3 worship – 9am - parents and carers welcome
Monday 31st March 2025	Parent Consultations 3.30pm to 6.30pm
Tuesday 1st April 2025	Parent Consultations 3.30pm to 5.30pm
Friday 4th April 2025	Class 4 worship – 9am - parents and carers welcome
Friday 4th April 2025	Celebration Worship - 2.45pm - parents and carers welcome
Tuesday 8 th April 2025	Easter craft afternoon 2pm (parents and carers welcome)
Thursday 10 th April 2025	Easter service in Church – 9.30am
Thursday 10th April 2025	Last day in School
Friday 11th April 2025	PD Day - school is closed to children
Wednesday 16 th April 2025	National offer day for Primary School places
Monday 28th April 2025	School re-opens
Wednesday 30th April 2025	Silent Disco - Smile Day
Monday 5th May 2025	Bank Holiday Monday
Monday 12th May 2025	KS2 SATS Week
Thursday 22nd May 2024	Year 6 Team Building at Summerhill
Friday 23rd May 2025	Last day – school closes for Whitsun
Monday 2nd June 2025	Multiplications Check Week
Monday 2 nd & Tuesday 3 rd June 2025	PD Days - school is closed to children
Wednesday 4th June 2025	School re-opens
Monday 9th June 2025	School Nurse drop in session - 8.45am to 9.45am
Monday 9th June 2025	Year 6 puberty refresher - School Nurse
Monday 9th June 2025	Phonics Screening Check Week
Thursday 19th June 2025	Sports Day Class 1 - 12:45pm – 1:15pm
Thursday 19th June 2025	Sports Day Class 2, 3, 4 - 1:15pm – 3:15pm
Friday 20 th June 2025	Feast Church Service 9.30am – St John the Baptist – parents and carers welcome
Thursday 10 th July 2025	Year 6 Leavers Church Service – 9.30am
Friday 11th July 2025	Celebration Worship - 2.45pm - parents and carers welcome
Monday 14 th July to Thursday 17 th July 2025	Transition week for Hartlepool schools
Friday 18th July 2025	Last day – school closes for summer holidays

DESIGNATED SAFEGUARDING LEADS

Our Designated Safeguarding Leads are Nicola Dunn, Sarah Richardson, Chloe Inman and Gillian Minton. If you have a concern about a child, please contact school and speak to a DSL.

STAFF CAR PARK

For health and safety reasons, please be advised that cutting across the main car park to gain entry to the main office is not permitted. Thank you for your co-operation.

